

# Connect your clients' employees to renowned cancer expertise

Cancer support services  
for Collective Health's  
employer clients



AccessHope is part of the Premier Partner Program™

# Oncology expertise and support for employees with cancer

**Cancer typically accounts for 12% to 15% of a company's overall healthcare costs<sup>1</sup>**

Cancer expenses are one of the top three medical expense categories for employers.<sup>2</sup> Help your clients take care of their workforce while saving healthcare costs and improving outcomes, so their employees can return to work, and their lives.

AccessHope connects employees who have been diagnosed with cancer and their community-based oncologists to the renowned cancer expertise of National Cancer Institute (NCI)–Designated Comprehensive Cancer Centers to help provide the right treatment early on for the best outcomes possible.

**Unlocking access to cancer support for more people across the country, AccessHope's suite of cancer support services includes:**

- **Cancer Support Team**
- **Expert Advisory Review**
- **Accountable Precision Oncology**



## Continuity of support through complementary services

Cancer Support Team and Expert Advisory Review work together to support your clients' employees whether they've just been diagnosed, have already started treatment, or have previously been diagnosed with cancer.



### Cancer Support Team

Your clients' employees can connect with experienced oncology nurses to discuss tips on preparing for doctor appointments, treatment information, or emotional concerns—wherever they are in their cancer journey.

#### **This service helps employees:**

- Understand their specific type of cancer
- Understand the types of treatments typically provided for their type of cancer
- Prepare for their first appointment with an oncologist
- Learn more about the availability and importance of clinical trials
- Access educational resources on cancer screening, prevention, and treatment



### Expert Advisory Review\*

Employees can request that an AccessHope medical expert reviews their case. This specialist may provide recommendations for their treatment plan based on groundbreaking insights and leading discoveries in their specific cancer to their community oncologist, so they can stay close to home.

To use this service, employees simply request a review from AccessHope. After one of our cancer subspecialists reviews their medical records and treatment plan, they'll send their recommendations in a comprehensive clinical report to the employee's community oncologist. The oncologist may then apply them as appropriate for their patient while engaging in a collegial collaboration with our specialist, to deliver optimal, coordinated care.



## Accountable Precision Oncology

When an employee receives a rare- or complex-cancer diagnosis, our algorithms—in collaboration with your clients' health plan or third-party administrator—trigger the case to be securely sent to AccessHope. AccessHope then assigns a cancer subspecialist to the case. Specializing in that particular type of cancer, the subspecialist leverages leading cancer expertise to suggest recommendations ranging from slight to significant changes associated with improved clinical outcomes, including the latest research findings and any suggested medications, tests, or clinical trials. The employee's community doctor continues to create and modify the treatment plan.



# Why AccessHope?



## The most-personalized care

Cancer isn't one disease—it's now subclassified into hundreds of types, defined by site and genetic blueprint. Through AccessHope, your clients' employees receive the subspecialized support they need for their specific type.



## Doctor-to-doctor communication

The employee's community physician continues to manage their treatment plan while our subspecialist sends them clinical recommendations and offers peer-to-peer discussion.



## Compassionate support

Employees access the world's most-up-to-date insights, without leaving home. As they stay with their local support system of family and friends, we don't let them feel unsupported on an unwanted journey.



## NCI expertise

Our oncology specialists offer expertise from NCI-Designated Comprehensive Cancer Centers at the forefront of the latest cancer breakthroughs and lifesaving discoveries.



## Ever-evolving knowledge

Our experts know of the newest personalized treatments, such as clinical trials or breakthrough medications, and genetic/genomic testing and targeted therapies.

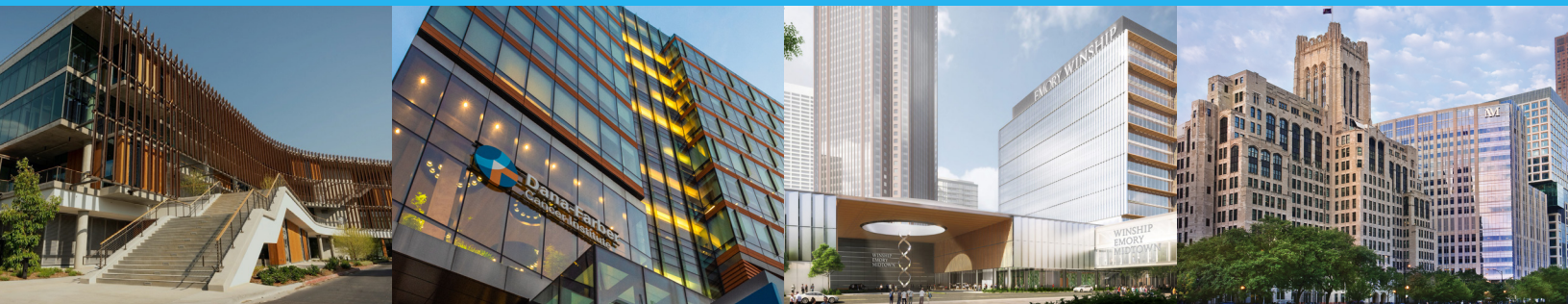


## Premier access to elite hospitals

The health institutions we offer access to have been ranked among the Best Hospitals for cancer care by *U.S. News & World Report*.



# World-class access to expertise from nationally distinguished Comprehensive Cancer Centers



City of Hope

Dana-Farber Cancer Institute

Emory Healthcare

Northwestern Medicine

AccessHope has formed a first-of-its-kind collaboration between NCI-Designated Comprehensive Cancer Centers. Through foundational partnerships with leading institutions in key geographical areas, AccessHope is extending our remote delivery of expert cancer solutions to people living with cancer from coast-to-coast.

Only 51 institutes hold the Comprehensive Cancer Center designation for conducting coordinated, high-quality programs. These programs must meet elite standards of premier leadership and resources, a depth and breadth of laboratory research, population science, and clinical research, and substantial transdisciplinary research that bridges these scientific areas. All of our foundational partners have earned prestigious rankings from *U.S. News & World Report*.

\* Not available in Rhode Island or outside of the United States

#### References

- 1 Shockney L. Paying attention to cancer pays off for your employees. Johns Hopkins Medicine Web site. <https://www.johnshopkinssolutions.com/paying-attention-cancer-pays-off-employees>. Accessed October 30, 2020.
- 2 Miller S. Employers focus on cancer prevention and care. *SHRM*. November 22, 2013. <https://www.shrm.org/resourcesandtools/hr-topics/benefits/pages/cancer-prevention-care.aspx>. Accessed January 28, 2021.

## Fighting cancer with everything we know™

Unlock access to renowned cancer expertise from National Cancer Institute-Designated Comprehensive Cancer Centers through AccessHope. The key for employees, their families, and their community-based oncologists to groundbreaking insights and leading discoveries, we provide employers the benefit of cancer support services that bridge the cancer knowledge gap for physicians and their patients, wherever they call home.

Visit [myaccesshope.org](https://myaccesshope.org) to learn more.

